



Pennsylvania Association of Colleges and Teacher Educators

June 2024 Update

**In this month's issue:
President's Greetings
Membership Year Ends; Time to Renew!
Teacher Education Assembly (TEA)
Honoring PAC-TE Board Members
PAC-TE Elections--Consider Nominating Someone You Know
EPLC Education Policy Fellowship Program
Wolkenhauer Wins ATE Award for Mentoring
#PA Needs Teachers Resources**



Greetings PAC-TE Members!

I hope you are having a great summer thus far. On June 1st, our executive leadership began their new roles. I am thankful for the leadership of John Ward for the past two years as president and for his continued service now as past president. A warm welcome to Jim Preston, who moves into the President-Elect position. I am also grateful to George Drake and Sally Winterton for their years of service, guidance, and leadership of PAC-TE. We welcomed several new board members at our recent board retreat in New Alexandria, PA. They will bring great insights and new ideas to provide our association with quality programming and services for our membership.

Moving forward, your Board of Directors will continue to engage and work with our colleagues at PDE, the State Board of Education, and the House and Senate Education Committees. It is important to have open dialogue and communication, so we can continue to deliver and develop quality programs for our future and current educators.

In May, I joined Kutztown University as Associate Dean of the College of Education. Additionally, I recently began my tenure on the Association of Teacher Educators (ATE) Board of Directors representing universities and colleges. I

encourage our members to get involved in ATE (<https://www.ate1.org/>) by attending conferences, submitting pieces to the two journals, and taking advantage of the ongoing programming offered. For example, ATE is currently offering Zoom sessions on the Clinical Experience Standards.

PAC-TE is unique in that we are also associated with AACTE. For our members who are at AACTE member institutions, PAC-TE's president serves as the ACSR Northeast Region Representative. Feel free to reach out to me about any questions or things related to AACTE.

Please encourage your full-time and part-time colleagues to join us this Fall at the 53rd Teacher Education Assembly (TEA) on October 23-25, 2024. We look forward to seeing you there, if not beforehand. I hope you have a restful but also productive summer.

Tom

PAC-TE Membership Year Ends; Time to Renew

PAC-TE is your professional association, existing thanks to your yearly dues and conference fees. At the end of June each year, your membership expires.

We would like to help you maintain your connection to PAC-TE by giving you a heads up to renew your membership.

There are two types of membership, but both offer the same benefits.

1) If you have an Institutional Membership (see graphic below), your dues must be renewed through your college or university. Please ask your department leader or administrative assistant to renew your group [here](#).

2) If instead you have an Individual Membership, you can renew at the Individual Membership [page](#). Individual Memberships are most often held by retirees, students, and those ineligible to be part of the Institutional Membership.

Dues remain the same for next year, as they have for the past several years, and entitle you to substantial discounts for our two yearly conferences. In addition, members are eligible for PAC-TE's Professional Achievement Awards and may be elected to serve on our Board of Directors. Finally, members may serve on committees, such as the conference planning committee.

If you don't see your institution among the names below, please ask your leadership team to become an Institutional Member

PAC-TE Institutional Memberships from 2023-2024

Albright College	Mount Aloysius College
Alvernia University	Muhlenberg College
Arcadia University	Neumann University
Bryn Athyn College	Penn State University- Harrisburg
Bucknell University	Pennsylvania State University
Butler County Community College	PennWest University of PA
Cairn University	Point Park University
Carlow University	Reading Area Community College
Cedar Crest College	Robert Morris University
Commonwealth University	Rosemont College
Delaware Valley University	Saint Francis University
DeSales University	Saint Joseph's University
Drexel University	Saint Vincent College
Duquesne University	Seton Hill University
East Stroudsburg University	Shippensburg University
Eastern University	Slippery Rock University
Elizabethtown College	Susquehanna University
Gannon University	Swarthmore College
Geneva College	Temple University
Grove City College	University of Pittsburgh
Gwynedd Mercy University	University of Pittsburgh at Bradford
Holy Family University	University of Pittsburgh- Johnstown
Immaculata University	University of Scranton
Indiana University of Pennsylvania	University of Valley Forge
Juniata College	Villanova University
Keystone College	Washington & Jefferson College
King's College	Waynesburg University
Kutztown University	West Chester University of PA
Lancaster Bible College	Westminster College
LaSalle University	Westmoreland County Community College
Lebanon Valley College	Widener University
Lehigh University	Wilkes University
Lycoming College	Wilson College
Marywood University	York College of Pennsylvania
Messiah University	
Millersville University	
Misericordia University	
Moravian University	

PAC-TE Board Transitions

As we thank outgoing Board members Sara Rutledge (Mt. Aloysius), Sally Winterton (Professor Emerita, West Chester University), George Drake, Jr. (Dean Emeritus, Millersville University) and Joe Domaracki (Indiana University, retired) for their many years of service to the PAC-TE Board of



I am Briana Bronstein. I am an Assistant Teaching Professor at Widener University. I received my Ph.D. in Special Education from Temple University and completed my postdoctoral training at Rutgers University. I teach at the undergraduate and graduate levels in the special education department. I work closely with our Community Engaged Teacher Education program. In addition to my work in academia, I am an active member and leader in the Council for Exceptional Children at both a national and state level. I am the past-president of PA-CEC and have served on the board for several years.



Stephanie Long is an Assistant Professor of Education at Butler County Community College where she serves as chair of the Early Childhood Education PreK-4 and the



I am Robin Drogan. I am a professor and graduate coordinator, serving Commonwealth University-Bloomsburg in a variety of capacities. I have served on the University Curriculum Committee since its inception. I serve as the Graduate Coordinator of our department. As a scholar, my work has focused on the application of behavioral supports and PBS, teaming and collaboration, and special education leadership. In addition to PAC-TE, I am a member of Association of Positive Behavior Supports and Council for Exceptional Children (CEC) including subdivisions DADD, DEC, CCBD, and TED.



Karin Sprow Forté has fifteen years of experience working at Penn State Harrisburg in its professional educator

Child Development/Family Studies associate degree programs. She is also an instructor in the College's Praxis/PECT teacher certification test prep program. She serves on the Mission, Vision, and Goals, Committee, the Strategic Planning Committee, and the Middle States Commission on Higher Education Committee. In addition, she is a Higher Ed Consortium member. Stephanie received both her B.S. in Education and Master of Education from Slippery Rock University. Stephanie feels her presence on the Board will bring a welcome community college perspective to the organization.

preparation program. This has demonstrated to her that stronger partnerships are needed among the stakeholders in education, including state agencies, education associations, community colleges, school districts, higher education institutions, and community partners, to improve teacher preparation and professional development. She hopes to serve you and your institution faithfully to ensure that the mission and values of PAC-TE are sustained in our efforts to wrestle with the challenges and continue to strengthen the teaching profession.

Who Would You Put on PAC-TE's Board of Directors?

The Executive Director of PAC-TE is soliciting nominations for four seats on the Board of Directors.

- One seat for a representative of a **private** institution of higher education
- One seat for a representative of a **public** institution of higher education; candidates for the open seat can represent any public institution
- Two seats for **At-Large** representatives. Candidates may come from any institution of higher education in Pennsylvania engaged in educator preparation



To nominate yourself or another PAC-TE member for any of these positions, submit a digital photo and the following information in a statement of **no more than 200 words**, organized in the following categories:

1. Name, title, present position and institution
2. Other related experiences and a statement about why you would make a good Board Member.
3. Prior involvement in PAC-TE

Send this information via email to Dr. John Ward (john.ward@live.kutztown.edu), PAC-TE Past President and Chair of the Nominations Committee, **by September 15, 2024**.

Please email Dr. Ward with any questions about the positions on the ballot.

Fall Conference is Just Around the Corner

PAC-TE's biggest and most talked about event is just a few months away. The 52nd annual TEA is set for October 23-25 at The Best Western Premier the Central Hotel and Convention Center, located in Harrisburg.

Final decisions about accepted proposals are in process now.

Early bird registration is open! Get a huge discount if you register prior to September 30. Members can pay \$175 as opposed to the standard \$225 fee. Non-members can pay \$275 as opposed to the standard \$300 fee.

We hope you can join your colleagues for fresh and engaging content. Act 48 hours will be available.

REGISTER [HERE](#)

EPLC LEADERSHIP PROGRAM FOR 2024-2025

Applications are available now for the 2024-2025 PA Education Policy Fellowship Program.

The Education Policy Fellowship Program is sponsored in Pennsylvania by The Education Policy and Leadership Center (EPLC).

The cohort meets virtually and in-person from September through May:

- 2-day in-person opening session in the Harrisburg area
- 2-day leadership forum in Gettysburg (battlefield) and Carlisle (U.S. Army War College) in October
- 14 three-hour virtual sessions on Friday mornings (about 2 per month)
- 1 mid-program in-person session in the Harrisburg area
- 2-day visit to Washington D.C. to meet with legislators and other leaders (April)
- Day-at-the-Capitol in Harrisburg to meet with legislators and other officials (May)
- Policy research and proposal on a current/anticipated education issue, completed throughout the year with a small team of Fellows and shared with policymakers in Harrisburg during the Day-at-the-Capitol
- Graduation and Annual Recognition Reception during which Fellows, Advanced Fellows and Alumni Award Winners are recognized and celebrated (May)

2024-2025 Participants have the option of earning 3 graduate

credits from Shippensburg University which are approved for 90 hours of Act 45/48 credit.

Applications are being accepted now! See **this page** for more information.

If you would like to discuss any aspect of the Fellowship Program and its requirements, please contact EPLC Executive Director Amy Morton at 717-253-2815 or morton@eplc.org

Wolkenhauer Wins Prestigious Award from ATE

ATE presented the Duaine C. Lang Distinguished Mentoring Award to Dr. Rachel Wolkenhauer from Penn State University. Rachel is pictured (far right, with Cynthia S. Haggard, chair of LFTE (the group that sponsors the scholarships and awards at ATE), and Dr. Jon Yoshioka, now Past-President, then President of ATE. PAC-TE congratulates Rachel.



CALLING ALL LITERACY LEADERS!



Pennsylvania Literacy Leadership Summit

Leadership Capacity Building for Structured Literacy Implementation

Administrators, principals, and teacher leaders—

Join us for a day of literacy leadership capacity building. Collaborate with colleagues as you learn strategies for creating the system-level conditions necessary for effective structured literacy implementation. *Act 45 & 48 credits available.*

KEYNOTE PANEL:

Developing a Shared Vision and Culture for Structured Literacy Implementation

BREAKOUTS:

District leadership to support principals	Formative assessment for differentiation
Strengthening school leadership teams	Curriculum development
Developing the pragmatics	MTSS
Choosing the right assessment tools	Coaching & ongoing educator learning
Data-driven instruction	

FRIDAY
OCT 4, 2024

Event space graciously provided by:
PaTTAN Central
6340 Flank Drive
Harrisburg, PA 17112

SAVE THE DATE

KEYNOTE PANEL



Nyshawana Francis-Thompson, Ed.D.
*Chief of Curriculum & Instruction,
School District of Philadelphia*



Rob Friel, Ed.D.
*Assistant Superintendent,
Southwestern School District*



Brian Ulmer, DPA
*Superintendent,
Jersey Shore Area School District*

Sponsored
by PBIDA in
partnership with:

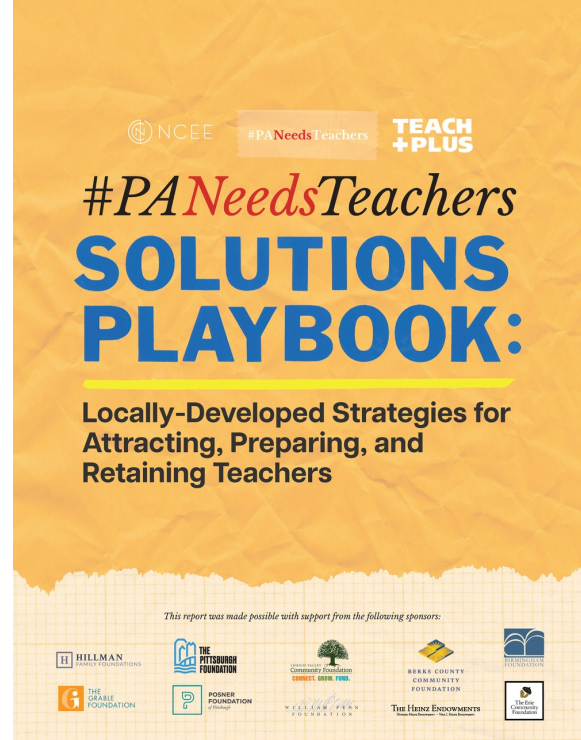


Helpful Resources from #PA Needs Teachers

Several PAC-TE member institutions contributed their strategies for addressing the statewide teacher shortage in the *Solutions Playbook*, a publication of #PA Needs Teachers, one of our partner associations. Other helpful reports include data about the severity of PA's teacher

shortage crisis by **County** and by **Senate District**. Both are good resources to learn about actual shortage data. Please consider sending a message to your state legislator(s) with data to support your concerns about solutions to the ongoing teacher shortages.

To view the Solutions Playbook online, go to <https://www.paneedteachers.com/solutions-playbook>



Dates to Keep in Mind

July 1 – September 30 – nominations for board positions
July 1 – September 30 – Teacher Educator of the Year Nominations
Now – September 30 – Early bird pricing for TEA Registration
October 23– 25, 2024 PAC-TE Teacher Education Assembly (in person), at Best Western Premier the Central Hotel & Conference Center, Harrisburg

VISIT OUR WEBSITE

PAC-TE is a state unit of AACTE and ATE



AACTE and PAC-TE collaborate to strengthen their advocacy efforts, share experience and expertise, and expand their members' professional development opportunities. To this end, our Chapter's relationship with AACTE is a voluntary affiliation that allows us to advance our members' interests.



The Pennsylvania Association of Colleges and Teacher Educators

joel@pac-te.org
· 717-516-8893 ·

If you have suggestions for a future *Update*, please contact us using the methods shown above.

FOLLOW US



Joel Geary, Executive Director | 17 Firebox Ct., 7175168893,
Stewartstown, PA 17363

[Unsubscribe joel@pac-te.org](mailto:joel@pac-te.org)

[Constant Contact Data Notice](#)

Sent by joel@pac-te.ccsend.com powered by



Try email marketing for free today!